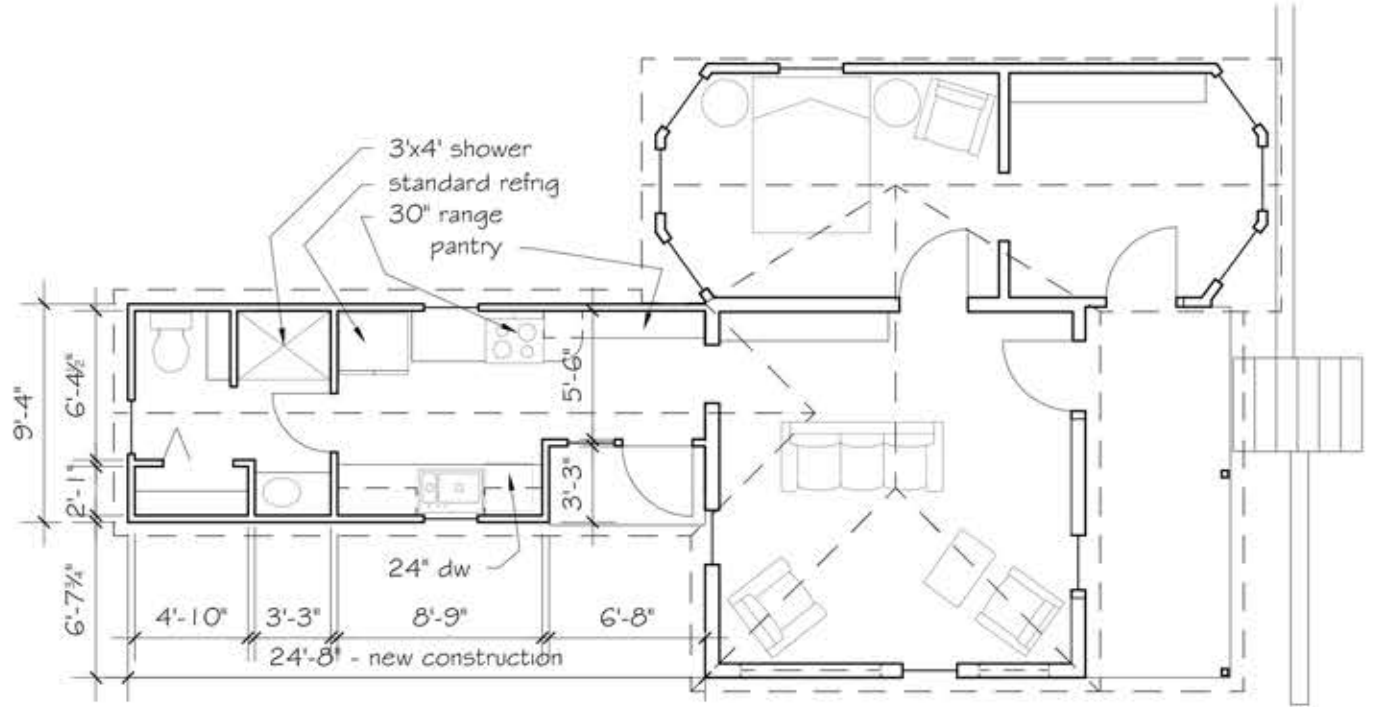


1 North Elevation
A-1 1/8" = 1'0"

2 South Elevation
A-1 1/8" = 1'0"



3 West (Rear) Elevation
A-1 1/8" = 1'0"



4 Plan - Lawyer's Office - 222 Royal Oak Street, Woodville, MS
A-1 1/8" = 1'0"
Salmon Architect PLLC
05-07-14